

The Smart Essentials For Your Clinic

Wall-Mounted Intraoral X-ray

- Smart angulations for optimal results
- Intuitive & convenient operating panel
- 2.4kg lightweight tube head for stable and safe use
- Ergonomic design for easy use



EzRay **Air**

| Lightweight Construction | Ergonomic Design |



Secure clear images with a **0.4mm focal spot**

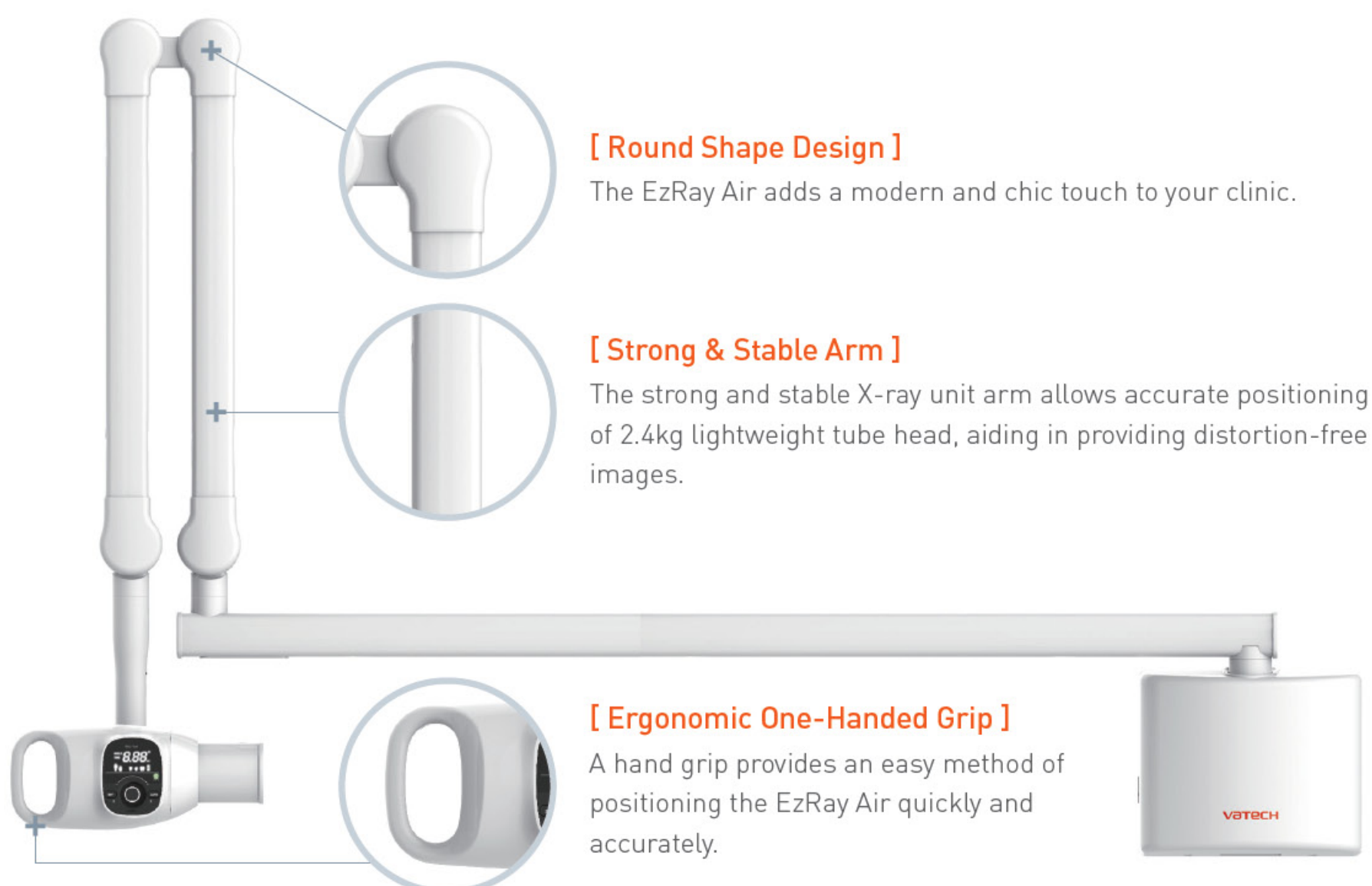
Regardless of which intraoral sensor you use, the EzRay Air minimizes blur and provides additional diagnostic value with a 0.4mm focal spot.



* Exposure Condition : 65kV, 3.0mA



Ergonomic design for safety and efficiency



EzRay Air (Wall Type) satisfies primary dental diagnostic needs by creating a stable and optimized X-ray source for the clearest possible image.

The Streamlined Wall Mounted X-Ray

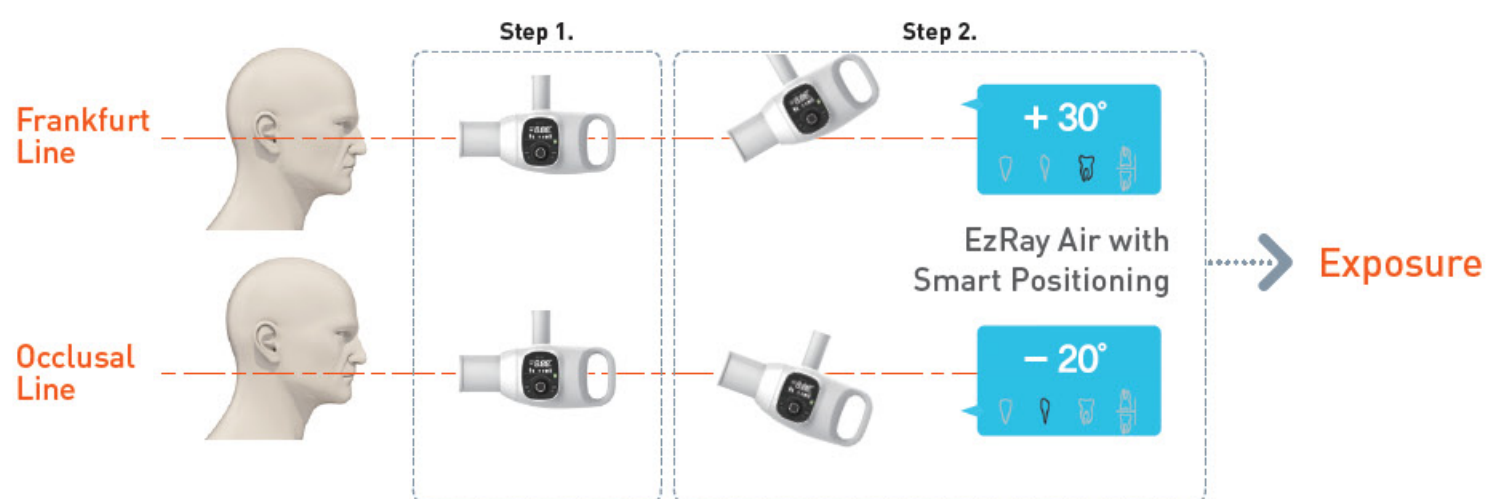


Smart angulations for optimal results

X-ray Operators rarely change the exposure time of their wall-mounted X-rays to the optimal level for their desired shot type (PAs , Occlusals, or Bitewings). The EzRay Air automatically can determine the shot type and optimal exposure settings for a clear image based on the angle of the device.

Step 1. Set the reference point.

Step 2. Exposure conditions for each tooth are set automatically by the specified angle.



One dial for all functions

The operating panel located on the tube head creates a simpler and faster workflow. The Smart Dial has all the settings in one dial, streamlining the workflow and decreasing preparation time. With the EzRay Air, there is no need to remember complicated controls panel buttons and configurations.



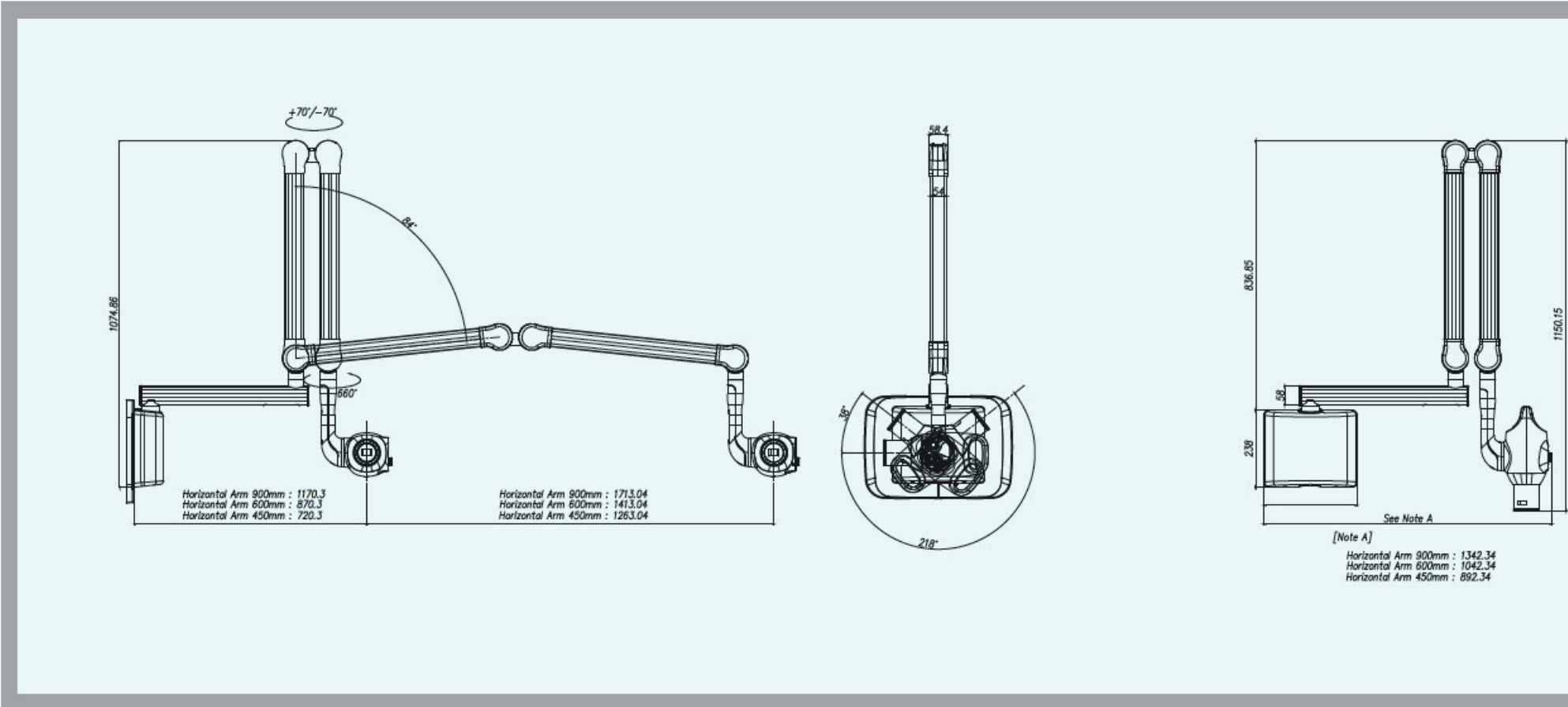
Lightweight for safe and easy use

A light wall-mounted intraoral X-ray creates a stable condition for safe and easy use.

The EzRay Air's 2.4kg lightweight tube head makes it easy to handle and position, producing a faster workflow for your staff.



Dimensions [Unit: mm]



Specifications [EzRay Air : VEX-S300W]

Focal Spot	0.4 mm (IEC 60336)
Tube Voltage (kV)	65 kV
Current (mA)	3.0 mA
Exposure Time Range	0.05 ~ 0.5 (0.01s increment)
Source to Skin Distance	Min. 200 mm
X-ray Field	Default : 60 mm Round, 30x40 mm Rectangular Optional: 20x30 mm Rectangular
Arm Length [Option]	450, 600, 900 mm
Accessories	Remote Exposure Switch (Hand Switch / Doorbell Switch)
Weight	15.9 kg (Arm Length 450 mm) 16.6 kg (Arm Length 600 mm) 17.9 kg (Arm Length 900 mm)

* The specifications are subject to change without prior notice.

